



Analysis of Comfort Properties of Mulberry Silk and Viscose Blended Knitted Fabrics for Suitability in Temperate Regions

Shikha Bajaj ^{a*} and Sandeep Bains ^b

^a Guru Nanak Khalsa college for Women, Gujarkhan campus, Model Town, Ludhiana, India.

^b Department to Apparel and Textile Science, Punjab Agricultural University, Ludhiana, India.

Authors' contributions

This work was carried out in collaboration between both authors. Both authors read and approved the final manuscript.

Article Information

DOI: <https://doi.org/10.9734/acri/2024/v24i6820>

Open Peer Review History:

This journal follows the Advanced Open Peer Review policy. Identity of the Reviewers, Editor(s) and additional Reviewers, peer review comments, different versions of the manuscript, comments of the editors, etc are available here: <https://www.sdiarticle5.com/review-history/120448>

Original Research Article

Received: 10/06/2024

Accepted: 12/08/2024

Published: 16/08/2024

ABSTRACT

This study reports on the impact of textile properties of knitted fabrics blended with three unlike proportions of mulberry silk and viscose fibre, on desired comfort for temperate regions. An experiment was conducted with knitted textiles, with uneven counts, each of which was mixed with either 60% mulberry silk and 40% viscose, 50% mulberry silk and 50% viscose, or 40% mulberry silk and 60% viscose. As part of the objective evaluation, we evaluated the fabrics on different comfort variables. To achieve the experimental design, thermal conductivity, air permeability, bursting strength and water repellency were taken into account. It has been exercised to bring about a knitted fabric with desired properties in temperate climates. Results suggest that knitted fabrics blended in 60% mulberry silk: 40% viscose in both yarn counts 15 and 20 Nm, were found

*Corresponding author: Email: shikhabajaj26@gmail.com;

most suitable for apparel use in temperate regions. These fabrics were holding a good mix of warmth and coolness by having thermal conductivity of 1.140 and 1.145 Clo, air permeability of 439.2 and 435.7 CFM and water repellency of grades 3 for both fabrics. A worthy influence of constructional properties was observed on comfort characteristics. A feeble negative correlation of thermal conductivity with air permeability and water perm was noticed.

Keywords: Applications; comfort; insulation; permeability; property; silk; viscose blending.

1. INTRODUCTION

“Human comfort is manifold, mostly subjective and is influenced psychologically by clothing” [1]. “The term comfort associated with absence of unpleasantness or discomfort or a neutral state compared to the more active state of contentment. The comfort can be interpreted as an amiable state of physiological, psychological, and physical conformity between a human and its environment” [2]. “It banks of the activity of the wearer, the type of clothing, the climatic environment (humidity, temperature, and wind velocity) and the sensibility of each subject. The understanding of heat and moisture transfers through clothing is a major concern for scientific researchers, designers, developers and manufacturers. Worn apparel works as a barrier for heat and vapour transport between the skin and the environment. It is composed of fibers materials, air enclosed between skin and garment, and still air bounded to the outer surface of it” [3]. Different clothing properties affect the thermal comfort for various climates.

“Temperate climates are the ones that can experience significant temperature changes between summer and winter, among all climates. So, most places with a temperate climate have four seasons viz. summer, autumn, winter and spring. The temperate climates (C-climates) are characterized by an average temperature of the coldest month between -3°C and 18°C , and an average temperature of the warmest month above 10°C ” [4]. “They dominate in the mid-latitudes but may also occur at higher elevations in lower latitudes. Other areas with a temperate climate can have very unpredictable weather. One day it may be sunny, the next may be rainy, and after that it may be cloudy. This is normal in summer as well as in winter” [5]. Therefore, apparel for such climates should be not so warm and not so cool at the same time. The fabrics used should be allow the air to pass and should trap it as well to provide certain amount of thermal insulation. It was understood that the heat and moisture transmission through apparel

was doubtlessly the most significant factor in clothing comfort [6]. Data reveals that wear comfort is highly demanded characteristic in clothing [7]. The comfort of swaddled body in relation to warmth largely banks on the nature of the equilibrium established between the properties held by the fabric. It has been seen by reviewing the literature that the subject has been mostly discussed subjectively, however, there has been a gap in terms of objective measurement of the same. In the present investigation, author has attempted to fill the research gap by analyzing the desired properties for achievement of fabric comfort in temperate regions.

1.1 Objectives

The goal of this study is to analyze the influence of parameters related to comfort for blended knitted fabrics by using mulberry silk and viscose fibre, for suitability in temperate regions. Also, the research aims to bring out the fabrics with appropriate mix of properties to be used in temperate climates for apparel use.

2. MATERIALS AND METHODS

2.1 Test Fabrics

Six types of fabrics were knitted in plain jersey structure, by using blended yarns of two different yarn counts, each in three different blending proportions viz. 60% mulberry silk: 40% viscose, 50% mulberry silk: 50% viscose and 40% mulberry silk: 60% viscose. Current experiment involved undyed and unbleached blended knitted fabrics.

2.1.1 Fibre characteristics

Fibres were washed in soft water and dried at room temperature for 48 hours. Mulberry silk waste (left over silk fibre) fiber with linear density 1.87 denier and cut length 130.667 was blended with viscose tops exhibiting linear density 3.96 denier and cut length 139.789 mm (Table 1).

2.1.2 Development of blended yarns

A worsted spinning system was used to blend mulberry silk waste and viscose fibre. Yarns were developed in two different counts. Mulberry silk waste was opened properly by hand and then was fed into carding machine. Further to this, the fibres were blended using gillbox. At this step, fibres were blended in three different ratios of 60: 40, 50:50 and 40:60. After this, drawing procedure was carried out. Sheikhi et al. [8] also

used gill box machinery for blending of acrylic fibres with varying fineness. Since, twist per inch is a parameter that influences output behavior of yarns, it was viewed as being held constant. Variables are viewed as changing while parameters typically either don't change or change more slowly [9], therefore, all the yarns were incorporated with same amount of twist (10 twists per inch). The developed yarn cones weighed 50 g each. Yarn characteristics have been depicted in Table 2.

Table 1. Physical and mechanical parameters of mulberry silk waste and viscose fibre

Physical parameters	Mulberry silk waste	Viscose
Fibre length (cm)	130.667	139.789
Fineness (denier)	1.87 ± 0.045	3.96 ± 0.119
Fibre diameter (microns)	12.73± 0.226	27.46± 0.364
Tenacity (gm / denier)	3.32	2.32

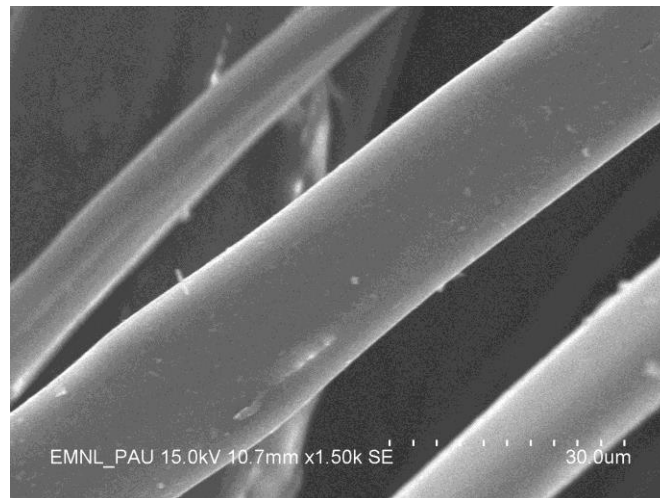


Fig. 1 a. Scanning Electron Photomicrograph of mulberry silk waste fibres at a magnification of 1500 times

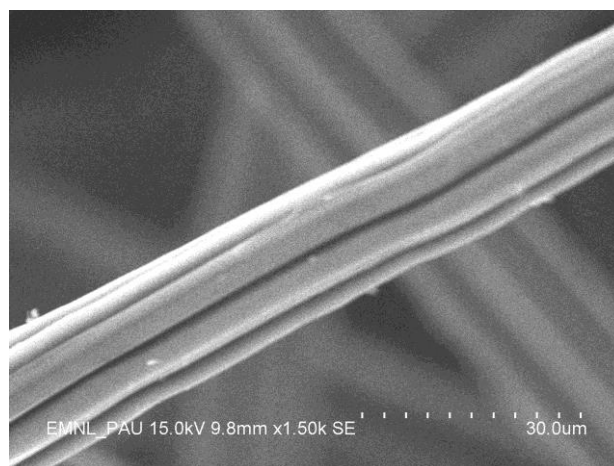


Fig. 1 b. Scanning Electron Photomicrograph of viscose fibres at a magnification of 1500 times

Table 2. Physical properties of blended yarns

Yarn density (Nm)	Blended ratio	Twist per inch (TPI)	Unevenness percentage (U %)
15	60% mulberry silk: 40% viscose	10	28.30
15	50% mulberry silk: 50% viscose	10	25.10
15	40% mulberry silk: 60% viscose	10	23.78
20	60% mulberry silk: 40% viscose	10	29.50
20	50% mulberry silk: 50% viscose	10	28.12
20	40% mulberry silk: 60% viscose	10	24.94

Table 3. Coding of developed fabric proportions

Blending proportion	Yarn count (Nm)	Code assigned
60% mulberry silk: 40% viscose	15	M ₁
60% mulberry silk: 40% viscose	20	M ₂
50% mulberry silk: 50% viscose	15	M ₃
50% mulberry silk: 50% viscose	20	M ₄
40% mulberry silk: 60% viscose	15	M ₅
40% mulberry silk: 60% viscose	20	M ₆

Table 4. Physical properties of knitted fabrics made by blending different proportions of mulberry silk and viscose fibres

Parameter	Fabric M ₁	Fabric M ₂	Fabric M ₃	Fabric M ₄	Fabric M ₅	Fabric M ₆
Yarn count (Ne)	15	20	15	20	15	20
Wales/ inch (WPI)	13	12	14	15	14	16
Courses/ inch (CPI)	19	18	19	20	20	18
Fabric thickness (mm)	0.883	0.840	0.763	0.663	0.883	0.703
Fabric weight, GSM	204.000	200.000	203.667	175.333	180.667	134.333
Stitch length (inch)	0.077	0.083	0.071	0.066	0.071	0.0625
Tightness factor	4.093	3.367	4.529	4.219	4.529	4.456

2.1.3 Construction of knitted fabrics

Developed knitted fabrics were assigned codes for ease of discussion and understanding (Table 3). Fabric knitted in 60% mulberry silk: 40% viscose yarn and 15 Nm count was called M₁, fabric made in 50% mulberry silk: 50% viscose in the same count was assigned code M₃, whereas fabric knitted in 40% mulberry silk: 60% viscose yarn in 15 Nm count was called M₅. In the similar pattern, fabric knitted in 60% mulberry silk: 40% viscose yarn and 20 Nm count was called M₂, fabric made in 50% mulberry silk: 50% viscose in the same count was assigned code M₄ and fabric knitted in 40% mulberry silk: 60% viscose yarn in 20 Nm count was called M₆.

Table 4 elucidates structural parameters of blended knitted fabrics. Yarn densities, tightness factor and fabric thickness for blended knitted fabrics have been determined. It is apparent from the results depicted that thickness of fabric M₁, M₂, M₃ and M₅ was more than that of fabric M₄ and M₆. Also, weight of fabrics M₁, M₂ and M₃ was more than fabrics M₄, M₅ and M₆. The

reason for this difference was the difference in yarn counts of yarns used for knitting the fabrics. Fabrics M₁, M₃ and M₅ were knitted by using a thicker yarn (15 Nm) as compared to M₂, M₄ and M₆ (20 Nm) thus carry more thickness and weight. Maximum tightness factor was calculated for fabric M₃ and M₅, however, there was no significant difference found among the values for all the fabrics.

2.2 Methods

2.2.1 Thermal insulation

KES-F 7 THERMO LABO II, Thermal insulation tester was used for measurement of thermal insulation in knitted fabric samples. The sample to be tested was placed over a heat plate and a constant temperature (room temperature plus another 10 °C) was maintained. It was then kept in contact with the air. After this, a constant wind was then applied continuously to the sample surface. The amount of heat lost through the sample was then measured by the instrument for calculating the heat retention rate (%). There are

two methods of measurement in general. One is dry method that measures direct values for the condition when contact is made between dry skin and textile material. The other one is wet method that takes values for condition when contact is made between sweaty skins. The test was therefore conducted by using dry contact method. For each specimen, the procedure was repeated three times and final calculation was made by taking mean of all the three readings.

2.2.2 Air permeability

The air permeability values of the blended knitted fabrics were measured by using automatic air permeability tester (ASTM D737). A circle of fabric (5cm²) was clamped into the tester and through the use of a vacuum, the 125 Pa of air pressure was made different on one side of the fabric. Airflow happened from the side with higher air pressure, through the fabric, to the side with the lower air pressure. From this rate of air flow, the air permeability of the fabric was determined. For each specimen, the procedure was repeated three times and final calculation was made by taking mean of all the three readings.

2.2.3 Water repellency

Water repellency was tested by using spray tester TF160 (AATCC 22). Spray tester is such an instrument which measures the water repellency of a fabric. In this test a 50 ml of water poured through a spray nozzle. The water fell on to the specimen which was mounted over a 6 inches diameter embroidery hoop and fixed at an angle of 45 degrees. When the water was used up, it was observed and grade was given to the specimen. For each specimen, the procedure was repeated three times and final calculation was made by taking mean of all the three readings.



Fig. 2. Water repellency tester

Spray rating:

- Grade 1: All of the surface is wet.
- Grade 2: More than half of the surface is wet.
- Grade3: Half of the surface is wet.
- Grade4: The surface appears water drop but not wet.
- Grade5: The surface is neither wet nor water drop

2.2.4 Diaphragm bursting

The bursting strength is an essential quality parameter of knit fabric [10]. Bursting strength is strength of the fabric against a multidirectional flow of pressure. The bursting test measures a composite strength of yarns in both the directions simultaneously and calculates the extent to which a fabric can bear a bursting type of force with a pressure being applied perpendicular to the surface of the fabric [11]. This method, for the determination of diaphragm bursting strength of knitted, nonwoven and woven fabrics is being used by the textile industry for the evaluation of a wide variety of end uses (ASTM International 2018).

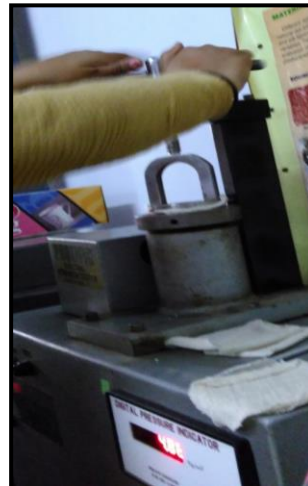


Fig. 3. Bursting strength test

Hydraulic bursting strength tester shown in Fig. 2 was used for measurement of bursting strength of test samples. Testing specimens were cut in circular shape with a diameter of 1.7 inches, which was ½ inch more than the diameter of the clamp over the machine. The liquid pressure at this instant is taken as a measure at the fabric strength. After fixation of test sample over the clamp, the machine was started. The fluid was displaced at a constant rate of 95 ml/min. Due to increase in pressure, the diaphragm bulged, taking with it the specimen. At a moment, the

fabric sample busted and pressure at the point was displayed over the screen. The reading was recorded. The test was repeated five times for each of the test specimen and final calculation was made by taking mean of the three readings.

3. RESULTS AND DISCUSSION

3.1 Thermal Insulation

The thermal insulation characteristics of various knitted fabrics (blended in 3 different proportions) were analyzed (Table 5). It was observed that fabrics with higher content of silk fibre *viz.* fabric M₁ and M₂ showed higher values for thermal insulation (Fig. 2). The outcome reveals that fabric M₁ and M₂ hold significantly higher ($p \leq 0.05$) insulating character than other fabrics. This may be understood by considering figures for fabric thickness and weight for blended knitted fabrics.

This is because of higher fabric thickness, lesser air permeability and higher tightness factor. Also, it was observed that the thermal insulation value of the knitted fabrics depends on the stitch/loop length [12], the knitted fabric having higher stitch length shows lower thermal insulation behavior. With higher density of fibres, thermal insulation value tends to increase [13]. In the present case also, fabrics with higher tightness factor exhibit higher thermal insulation values. In temperature region, where there is never too hot and never too cold, insulating character of fabric should be more than 1 Clo, however, higher the 2 Clo may produce unnecessary heat for the climate. Fabric M₁ and M₂ seem appropriate for usage in this case.

3.1.1 Effect of fabric thickness, fabric weight, stitch length and tightness factor on thermal insulation

Table 5 shows statistical analysis of results at 5% level of significance. The thermal insulation values of the knitted fabrics show significant difference (critical difference 0.095) at 95% degree of freedom. Table 6 elucidates the findings of regression analysis of thermal insulation in relation to four independent variables *viz.* Fabric thickness, fabric weight, stitch length and tightness factor. Regression coefficient shows positive impact of fabric thickness and fabric weight on thermal insulation, which clearly means that thermal insulation also raises with rise in the value of fabric thickness and weight, however, effect was not found to be significant in both the cases. As regards to stitch length, a negative coefficient reveals a non

significant negative relationship. Tightness factor, again positively influences insulating character of the fabric. The relationship was also found to be significant in this case. Frydrych et al. [14] also concluded in their study that higher insulating properties can be achieved by right choice of fabric thickness and fabric cover factor. Other than this, type of content of the fabric greatly affects the thermal insulation character of the fabric. In the present study, fabrics M₁ and M₂ were knitted by using 60% mulberry silk: 40% viscose and therefore silk content is more than the other fabrics. Silk composition shows higher insulating properties in comparison to cellulosic fabrics.

3.2 Air Permeability

Air permeability was found to be the highest for fabric M₅ followed by fabric M₃. Ogulata [15] stated that air permeability is mainly dependent upon the fabric's weight and construction (thickness and porosity). It can be clearly seen in Table 7 that fabrics with lower thickness and weight have scored higher figures for air permeability. Air permeability is a significant measure of comfort as it can influence the body in more than one way. When fabrics allow the air to pass in a momentous quantity, the human body cools itself by sweat production and evaporation during periods of high activity. Also, the thermal resistance of a fabric is strongly dependent on the enclosed still air, and this factor is in turn influenced by the fabric structure [6]. However, too much allowance to air can hinder the convenience of body in temperate regions. It will cause too much passage of air which is not suitable for a region of temperature 18°C or around [16].

3.2.1 Effect of Fabric thickness, Fabric weight, Stitch length and Tightness factor on air permeability

Table 7 reveals impact of various constructional parameters on air permeability of the fabric. Regression coefficient shows negative impact of fabric thickness and fabric weight on air permeability, which means that air permeability of blended knitted fabrics will decrease with rise in the value of fabric thickness and weight, however, effect was not found to be significant in both the cases. Air permeability decreases with fabric weight and have significant negative correlation [17]. As regards to stitch length, a positive coefficient reveals a significant negative relationship. Tightness factor, again negatively

influences air permeability of the fabric. The relationship was also found to be significant in this case. Herath [18] concluded in his study that there was a correlation with fabric tightness, air

permeability and fabric thickness such as knitted fabrics became tighter, their weight and thickness were higher, while their air permeability was found to be lower.

Table 5. Analysis of fabrics blended knitted fabrics for comfort properties

Comfort parameter	Fabric M ₁	Fabric M ₂	Fabric M ₃	Fabric M ₄	Fabric M ₅	Fabric M ₆	Critical difference
Thermal insulation (Clo)	1.140 ^a	1.145 ^a	0.980 ^{bc}	1.028 ^b	0.972 ^b	1.034 ^b	0.095
Air permeability (CFM)	439.2 ^a	435.7 ^b	687.4 ^c	571.8 ^a	715.7 ^d	505.8 ^e	14.642
Water repellency (Grade)	3 ^a	3 ^a	3.5 ^b	2 ^d	2.5 ^c	2 ^d	0.057
Bursting strength (kg/cm ²)	7.714 ^a	5.135 ^c	6.757 ^b	4.730 ^c	7.712 ^a	4.740 ^c	5.319

^{a,b,c} Significant at 5 % level of significance, same alphabet= no significant difference, different alphabet= significant difference, CD= Critical difference, NS= Not significant

Table 6. Effect of fabric thickness, fabric weight, stitch length and tightness factor on thermal insulation of blended knitted fabrics

Thermal Insulation	Independent parameters				
		Coefficient	Standard error	t-value	p value
	Constant	1.995	0.593	3.364	0.005
	X1	0.141	0.218	0.646	0.530
	X2	0.001	0.001	0.613	0.550
	X3	-5.507	5.061	-1.088	0.296
	X4	0.180	0.065	-2.754	0.016
	R ² (%)	0.724			

t-value= t statistic value, p= probability value, *Significant at 5 percent level of significance
 X1= Fabric thickness
 X2= Fabric weight
 X3= Stitch length
 X4=Tightness factor

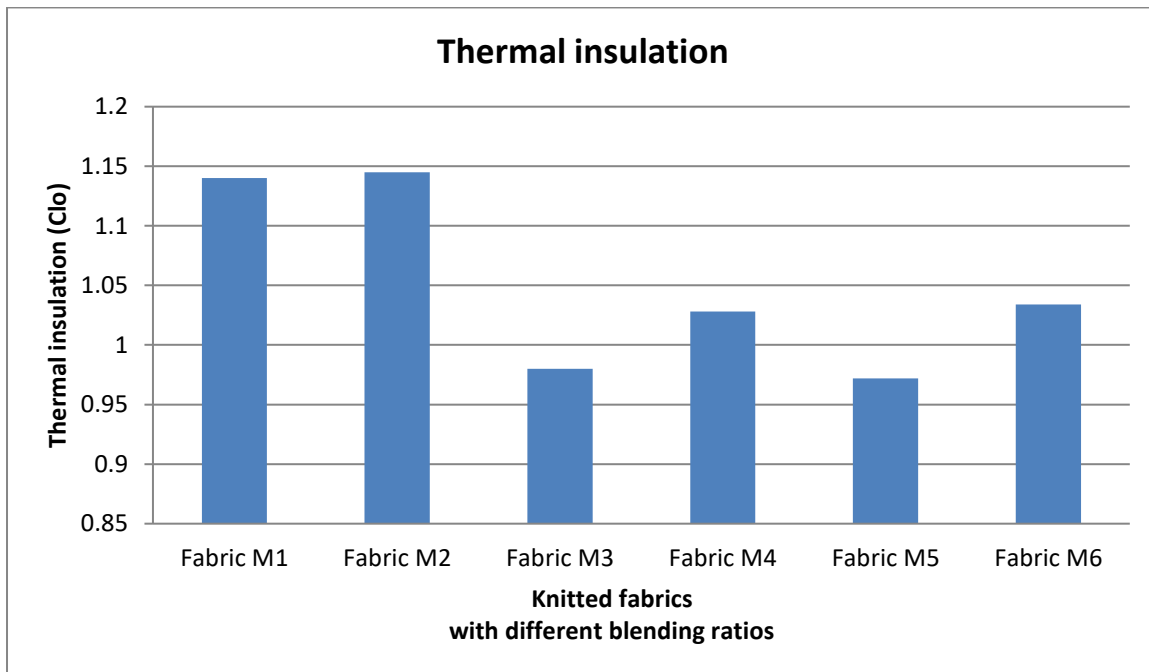


Fig. 4. Thermal insulation behaviour of knitted fabrics blended in three different proportions

Table 7. Effect of fabric thickness, fabric weight, stitch length and tightness factor on air permeability of blended knitted fabrics

Air permeability	Independent parameters	Coefficient	Standard error	t-value	p value
	Constant	81.419	1432.088	0.57	0.956
	X1	-531.377	527.399	-1.008	0.332
	X2	-1.168	2.325	-0.502	0.624
	X3	13960.610	123.827	1.143	0.274
	X4	-23.234	157.650	0.147	0.885
	R ² (%)	0.339			

*t-value= t statistic value, p= probability value, *Significant at 5 percent level of significance*

X1= Fabric thickness

X2= Fabric weight

X3= Stitch length

X4=Tightness factor

3.3 Water Repellency

Highest score was obtained by fabric M₃ (3.5), followed by similar grade of 3 by fabrics M₁ and M₂ (Table 5). Results reveal that water repellency of most fabrics was not so high. For a temperate region, fabrics with average level of permeability to water will work well Hyun-Ah Kim [19], however, the fabrics under study, fabrics M₁, M₂ and M₃ show average levels of water repellency, while fabrics M₄, M₅ and M₆ may be called poor performers on this scale. Fabrics M₁ and M₂ however, carry lesser amount of hydrophilic fibre (viscose rayon), still exhibited higher grades of water repellency. The reason for this may be understood by considering the influence of fabric thickness, fabric weight, stitch length and tightness factor on fabric performance.

3.3.1 Effect of fabric thickness, fabric weight, stitch length and tightness factor on water repellency

Table 8 reveals impact of various constructional parameters on water repellency of the fabric. Regression coefficient shows impact of fabric thickness water repellency, which means that water repellency of blended knitted fabrics will witness a fall with rise in the value of fabric thickness, however, the relationship was found to be non significant. Wilbik-Halgas et al. [20] concluded in their study that water vapour permeability has no correlation with thickness in knitted fabrics. Fabric weight, however, will negatively affect the amount of water entering into fabric surface. As regards to stitch length, again a negative coefficient is sign of significant negative relationship. Also, in a study by Chidambaram et al. [21], the anticipated increase in air permeability and relative water-vapour permeability with a decrease in yarn linear density and increase in loop length was

observed. In the present study, if densities of yarns used for knitting were analyzed, it was observed that fabrics knitted with yarn of lower densities have exhibited higher permeability to water. Tightness factor, on the other hand, also negatively influences water repellency of the fabric. The relationship was also found to be significant in this case. Tightly constructed fabrics transmit water vapour predominantly by a diffusion-controlled mechanism similar to air permeability [22]. R² value determines the proportion of variance in the water repellency that can be explained by the independent variables such as fabric thickness, fabric weight, stitch length and tightness factor.

3.4 Bursting Strength

Mean values for bursting strength of knitted fabrics were found to be 7.714 kg/cm² for fabric M₁ and 5.135 kg/cm² for fabric M₂. Mean values for bursting strength of knitted fabrics were found to be 6.757 kg/cm² for fabric M₃ and 4.950 kg/cm² for fabric M₄. Findings reveal that a higher bursting strength has been found for fabric M₃ in comparison to that of fabric M₄ and similar values have been witnessed in M₃ and M₄. Since bursting strength largely depends on tensile strength of the fabric [23], it is evident that the results are in line with the findings of tensile strength where higher value was computed for fabric M₃. Also, fabric M₅ being a thicker fabric, is apt to show high bursting strength. Bursting strength for fabric M₅ was calculated as 7.712 kg/cm² whereas fabric M₆ bursted at 4.740 kg/cm². Results inform that a higher bursting strength was found for fabric M₅ in comparison to that of fabric M₆ (Table 5). Sitotaw [24] reported in his study that the structures having higher thickness have higher bursting strength properties.

Table 8. Effect of fabric thickness, fabric weight, stitch length and tightness factor on water repellency of blended knitted fabrics

Water repellency	Independent parameters				
		Coefficient	Standard error	t-value	p value
	Constant	3.302	4.227	0.781	0.449
	X1	-2.646	1.557	-1.700	0.113
	X2	0.004	0.007	0.639	0.534
	X3	-9.860	36.066	-0.273	0.789
	X4	-0.131	0.465	0.281	0.783
	R ² (%)	0.373			

*t-value= t statistic value, p= probability value, *Significant at 5 percent level of significance*

X1= Fabric thickness

X2= Fabric weight

X3= Stitch length

X4= Tightness factor

3.5 Relationship of Air Permeability with Thermal Insulation

It has been observed that quality of air permeability also has great impact on insulating power of the fabrics. Ramachandran et al (2010) mentioned that thermal conduct values increase with rise in air permeability of knitted fabrics. In other words, thermal insulation values decrease with increase in fabric air permeability. During testing, it was viewed that both the properties were seen to have inverse association.

“Correlation coefficient was calculated and a technically negative, but non significant, correlation between both variables was noticed. Air layers trapped within a clothing microenvironment contribute to the thermal insulation afforded by the ensemble. Any exchange of air between the external environment and these trapped air layers results

in a change in the ensemble's thermal insulation” [25]. Therefore the harmony between the two parameters can only bring about a appropriate fabric for temperate regions.

3.6 Relationship of Water Repellency with Thermal Insulation

“Heat transfer through clothing is an important topic related to thermal comfort in environmental engineering and functional clothing design. The total heat transmitted through clothing is commonly considered as the sum of the dry heat transfer and the evaporative heat transfer” [26]. Hence, permission to moisture to enter the fabric surface is an important parameter which will affect the insulating power of the material to large extent. When tested statistically for the present test samples, a negative correlation was found between the two variables; however the relationship was not significant [27,28].

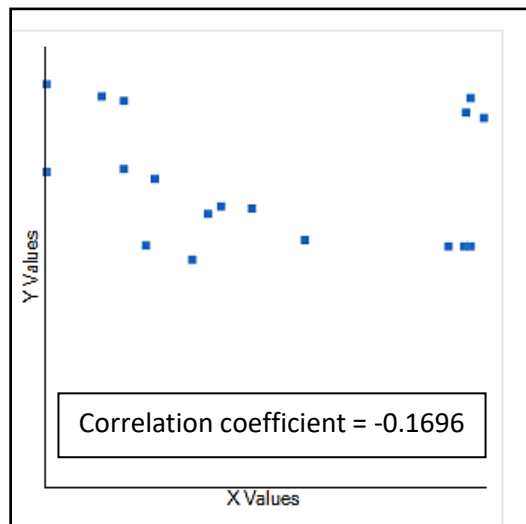


Fig. 5. Correlation between Thermal insulation and Air permeability
(X values= Thermal insulation, Y values= Air permeability)

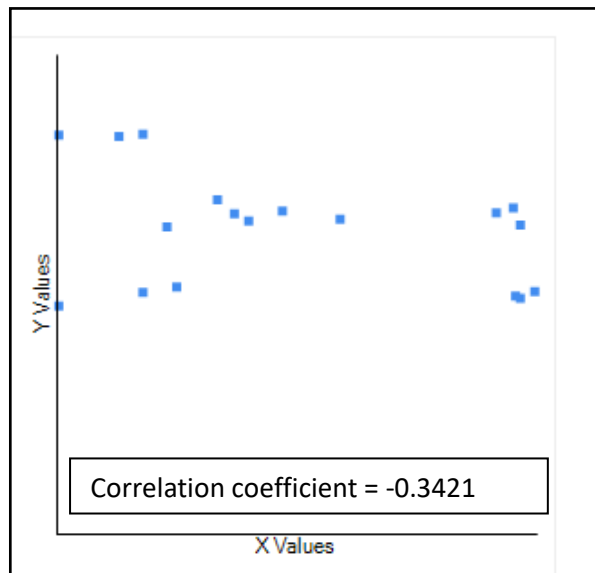


Fig. 6. Correlation between Thermal insulation and Water repellency
(X values= Thermal insulation, Y values= Water repellency)

4. CONCLUSION

Comfort is mostly a subjective expression and not been judged much in objective manner so far. It can be expressed by the experience of a person, however, objective computation of the same by considering factors and properties influencing comfort. In the present study, figures for thermal insulation of fabrics knitted with 60% mulberry silk: 40% viscose, in both yarn counts, 15 and 20 Nm were 1.140 and 1.145 Clo respectively which appropriately suit general climate of temperate regions. Higher silken content alongwith constructional parameters of fabric thickness, weight, stitch length and tightness factor has played vital role in giving values above 1 Clo. Air permeability on the other hand is much higher for fabrics knitted with a composition of 50% mulberry silk: 50% viscose and 40% mulberry silk: 60% viscose in yarn count 15 and 20 Nm. But too much airflow can cause feeling of uneasiness and cold in temperatures of 18°C or below. Figures for fabrics knitted with 60% mulberry silk: 40% viscose in both yarn counts 15 and 20 Nm were found to be 439.2 and 435.7 CFM, which were not too high, but will allow a good amount of air to pass through it. An average score for water repellency was also scored by both these fabrics making them suitable to be used in temperate climates for apparel use. A good bursting strength was shown by both the fabrics. A mix and balance of available figures assert on having evenness in warm and cool feeling. Study agrees with past reviews that constructional parameters

hugely affect the performance of fabrics in terms of comfort. Changes in thickness, weight, tightness factor and stitch length has affected the final properties of blended knitted fabrics. Also, higher silk content in fabrics knitted with 60% mulberry silk: 40% viscose in both the counts was responsible for convenient insulating aspect and water repellency. While concluding, authors recommend using a fabric blend of 60% mulberry silk: 40% viscose for clothing purposes in temperate regions. A variety of wearable apparel items can be developed by using the particular fabric viz. light weight shrugs, jackets, shirts and other daily use clothing items. The study suggests a novel and reliable path towards comfort with opportunearance.

DISCLAIMER (ARTIFICIAL INTELLIGENCE)

Authors hereby declare that NO generative AI technologies such as Large Language Models (ChatGPT, COPILOT, etc) and text-to-image generators have been used during writing or editing of manuscripts.

COMPETING INTERESTS

Authors have declared that no competing interests exist.

REFERENCES

1. Song G. Improving comfort in clothing. Woodhead publishing Ltd. 2011;1.

2. Marolleau A, Salaun F, Dupont D, Gidik H, Ducept S. Influence of textile properties on thermal comfort. IOP Conf. Se. Mater. Sci. Eng. 2017;254:18.
3. Havenith G. Heat Balance When Wearing Protective Clothing. Annals of occupational Hygiene,.
4. Daniel G. Kingston , Monica Ionita , Kerstin Stahl , Albert Van Dijk. Hydro climatology, Hydrological Drought (Second Edition), Processes and Estimation Methods for Streamflow and Groundwater, 2024;21-47.
Available:<https://doi.org/10.1016/B978-0-12-819082-1.00012-6>.
5. Pandey K, Hotter than normal: Trends show that it is true for both summer and winter temperature, News-Down to Earth, Available:<https://www.downtoearth.org.in/news>.
6. Dhinakaran M, Sundaresan S, Dasaradan BS. Comfort properties of apparel. The Indian Textile Journal; 2007.
Available:<http://www.indiantextilejournal.com/articles/FAdetails.asp?id=309>.
7. Hipler UC, Elsner P. Biofunctional Textiles and the Skin. Curr Probl Dermatol. Basel, Karger. 2006;33:51-66.
8. Sheikhi H, Shaikhzadeh NS, Etrati SM, Dayiary Bidgoly M. Effect of the Acrylic Fibre Blend Ratio on Carpet Pile Yarn Compression Behaviour. Fibres & Text in Eastern Europe. 2010;93:77-81.
9. Nykamp DQ. Math Insight; 2012.
Available:<https://mathinsight.org/on> 8.2.2018. 2012.
10. Elias KE, Rahman MO, Zakir Hossain HM. Predicting Bursting Strength Behavior of Weft Knitted Fabrics Using Various Percentages of Cotton, Polyester, and Spandex Fibers, Journal of Textile Science and Technology. November 2023; 9(4).
DOI: 10.4236/jtst.2023.94019 .
11. Angappan P, Gopalkrishnan. Textile testing. SSM Institute of textile technology, Komarapalayam, Tamil Nadu, India. 2018;317.
12. Ramchandran T, Manonmani G, Vigneswaran C. Thermal behavior of ring and compact spun yarn single jersey, rib and interlock knitted fabrics. Indian J of Fibre & Textile Research. 2009;35:250-257.
13. Marolleau A, Salaun F, Dupont D, Gidik H, Ducept S. Influence of textile properties on thermal comfort. IOP Conf. Se. Mater. Sci. Eng. 2007;254:18.
14. Frydrych IG, Dziworska I, Bilaska J. Comparative Analysis of the Thermal Insulation Properties of Fabrics Made of Natural and Man-Made Cellulose Fibre. Fibres & Textiles in Eastern Europe; October/December 2002.
15. Ogulata RT, Air Permeability of woven fabrics journal of textile and apparel, technology and management. 2006;5:1-10.
16. The environmental literacy council. Latitude & Climate Zones; 15 July 2017.
17. Debnath, Madhusoothanan. Thermal insulation, compression and air permeability of polyester needle-punched nonwoven. Indian Journal of Fibre & Textile Research March. 2010; 35(1):38-44.
18. Herath CN. Investigation of air permeability of core spun cotton/spandex weft knitted structures under relaxation. Fibers and Polymers. 2013;14(8):339-1346.
19. Hyun-Ah Kim. Water repellency/proof/vapor permeability characteristics of coated and laminated breathable fabrics for outdoor clothing; 2021, DOI:10.3390/coatings12010012.
20. Wilbik-Hałgas B, Danych, Więcek R, Kowalski K. Air and water vapour permeability in double-layered knitted fabrics with different raw materials. Fibres & Textiles in Eastern Europe July. 2006;14(3)57:77-80.
21. Chidambaram P, Govind R, Chandramouli Venkataraman K. The effect of loop length and yarn linear density on the thermal properties of bamboo knitted fabric. Autex Research Journal. 2011 Dec 1;11(4):102-5.
22. Lomax GR. The design of waterproof, water vapour-permeable fabrics. Journal of industrial Textiles. 1995;15,1: 40-66.
23. Anonymous. Burst Strength, Business dictionary; 2024.
Available:<http://www.businessdictionary.com/definition/burst-strength.html> on 8.07.2024.
24. Sitotaw DB. An Investigation on the Dependency of Bursting Strength of Knitted Fabrics on Knit Structures. Industrial Engineering & Management. 2017;63:221-224.
25. Bouskill LM, havenith G, Kuklane K, Parsons KC, Withey WR. Relationship

- Between clothing ventilation and Thermal insulation. AIHA Journal. 2002; 63.
26. Chen YS, fan J, Zhang W. Clothing Thermal Insulation During Sweating. 2003;73(2):152-157.
27. Anonymous. Comfort properties of silk and silk union fabrics; 2012. Available:<https://www.google.com/search?client=firefox-b->
28. McColl RW. Encyclopedia of World Geography. 2005;1.

Disclaimer/Publisher's Note: The statements, opinions and data contained in all publications are solely those of the individual author(s) and contributor(s) and not of the publisher and/or the editor(s). This publisher and/or the editor(s) disclaim responsibility for any injury to people or property resulting from any ideas, methods, instructions or products referred to in the content.

© Copyright (2024): Author(s). The licensee is the journal publisher. This is an Open Access article distributed under the terms of the Creative Commons Attribution License (<http://creativecommons.org/licenses/by/4.0>), which permits unrestricted use, distribution, and reproduction in any medium, provided the original work is properly cited.

Peer-review history:

The peer review history for this paper can be accessed here:

<https://www.sdiarticle5.com/review-history/120448>